



EMERSON[™]
Industrial Automation

Unimotor *fm*



Product Data
055 to 190 Frames




**CONTROL
TECHNIQUES**

www.ctdynamics.com


Introducing the 055 to 190 frames.

Unimotor  is a range of brushless AC servo motors which support a winding to suit 200/240V or 400/480V nominal AC drives such as the Unidrive , Unidrive classic, M'Ax and MultiAx range of drives. The range is available in six frame sizes 055:075:095:115:142 and 190mm, each frame size has a number of shaft diameter options and can offer various front flange mounting arrangements. The 190 frame motor has been increased in variants from 4 (A-D) to 8 (A-H). The design also conforms to the sealing standard IP65 (when mounted and connected).

Standard Features

- * Modular rotor design.
- * Rotor assembly balanced to ISO1940 (BS 6861) G 6.3.
- * Incremental encoder for high precision feedback.
- * PTC thermistors for thermal monitoring and overload protection.
- * IP65 standard; sealed against water spray and dust. (IP65 mating connectors must be used)
- * Vertical connectors for power and signal. **New Feature**
- * Low inertia is standard for fast acceleration.
- * UL and cUL recognised motors (075-190 frame motors only). 
- * IEC mounting flange.
- * Shaft key as standard.

Optional Features

- * Parking brake.
- * High energy dissipation brake. **New Feature**
- * 90° fixed or 90° rotatable connectors. **New Feature**
- * A range of shaft diameter. **New Feature**
- * Optional IEC and NEMA flanges available. **New Feature**
- * High inertia.
- * Other Incremental encoder interfaces available.
- * Resolver feedback for rugged applications.
- * Sin/Cos encoder for high resolution and accuracy (single and multi-turn). Other interfaces available.
- *  **technology** (075-190 frame motors only).
- * NEMA mounting available.
- * ATEX motors available (special conditions apply). (075-190 frame motors only).
- * Plain shaft (non keyed).
- * Electronic name plating (Available on Sincos motors only). (075-190 frame motors only). **New Feature**
- * IP 54 rated motors (055 only). **New Feature**

Optional Products



- * Cable assemblies for power and signal.
(Compliant to DESINA standard)

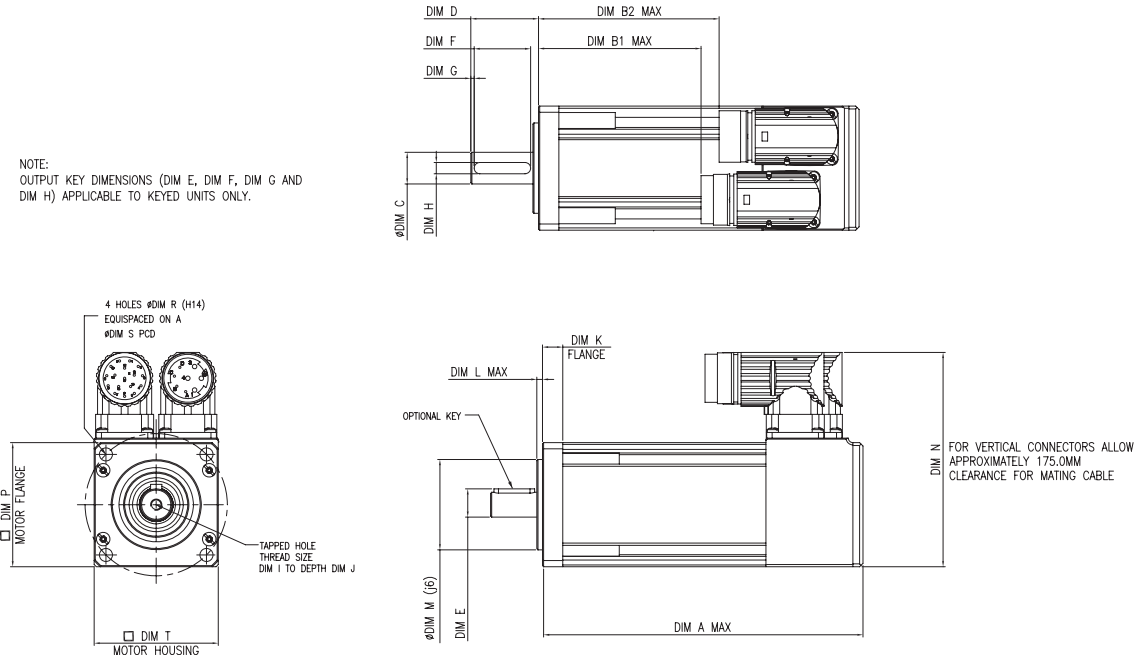


- * Gearbox options, high precision low backlash or general purpose, parallel shaft or right angle gearboxes available in various ratios.

* Where volumes have justified it, Control Techniques have designed a number of custom specific motors. Please contact your Drive Centre or Distributor for details.

Dimensions (mm) Frame size 055

NOTE:
OUTPUT KEY DIMENSIONS (DIM E, DIM F, DIM G AND DIM H) APPLICABLE TO KEYS UNITS ONLY.



Standard Motor Dimension (mm) Note: All dimensions shown are at maximum

	UNBRAKED Length			BRAKED Length			FLANGE THICKNESS	REGISTER LENGTH	REGISTER DIAMETER	OVERALL HEIGHT	FLANGE SQUARE	FIXING HOLE DIAMETER	FIXING HOLE PCD	MOTOR HOUSING
	A	B1	B2	A	B1	B2								
055A	118.0	48.0	56.0	155.0	85.0	93.0	9.0	2.5	40.0	96.0	55.0	5.8	63.0	55.0
055B	142.0	72.0	80.0	179.0	109.0	117.0								
055C	166.0	96.0	104.0	203.0	133.0	141.0								

Vertical connectors dimension (mm) Note: All dimensions shown are at maximum

	Unbraked Length		Braked Length		Power Connector	Signal Connector
	B1	B2	B1	B2	N	N
055A	75.0	83.0	112.0	120.0	105.0	93.0
055B	99.0	107.0	136.0	144.0	105.0	93.0
055C	123.0	131.0	160.0	168.0	105.0	93.0

Optional connector height (mm)

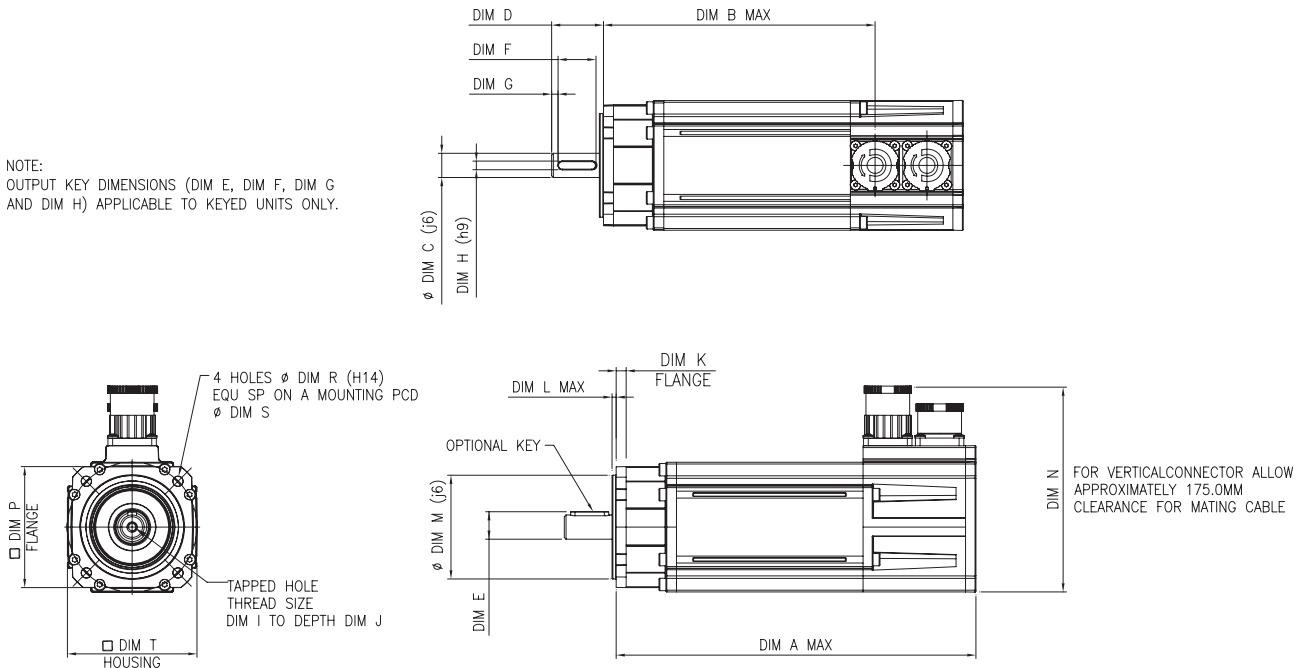
A type	88.0
B type	96.0
C type	96.0
V type	105.0

Shaft Diameter (mm)

	SHAFT DIAMETER	SHAFT LENGTH	KEY HEIGHT	KEY LENGTH	KEY TO SHAFT END	KEY WIDTH	TAPPED HOLE THREAD SIZE	TAPPED HOLE DEPTH
	C	D	E	F	G	H	I	J
9.0	9 (j6)	20.0	11.1	15.0	1.0	3.0	M4	10.0
11.0	11 (j6)	23.0	12.5	18.0	1.5	4.0	M4	10.0
14.0	14 (j6)	30.0	15.9	25.0	1.5	4.0	M5	12.5

Dimensions (mm) Frame size 075

NOTE:
OUTPUT KEY DIMENSIONS (DIM E, DIM F, DIM G
AND DIM H) APPLICABLE TO KEYPED UNITS ONLY.



Standard Motor Dimension (mm) Note: All dimensions shown are at maximum

	UNBRAKED Length		BRAKED Length		FLANGE THICKNESS	REGISTER LENGTH	REGISTER DIAMETER	OVERALL HEIGHT VERTICAL	FLANGE SQUARE	FIXING HOLE DIAMETER	FIXING HOLE PCD	MOTOR HOUSING	MOUNTING BOLTS
	A	B	A	B									
075A	209.1	158.2	254.1	203.2	6.3	2.5	60.0	119.5	70.0	6.1	75.0	75.0	M5
075B	239.1	188.2	284.1	233.2									
075C	269.1	218.2	314.1	263.2									
075D	299.1	248.2	344.1	293.2									

Optional flange motor dimensions (mm)

	UNBRAKED LENGTH		BRAKED LENGTH	
	A	B	A	B
075A	193.5	142.6	238.5	187.6
075B	223.5	172.6	268.5	217.6
075C	253.5	202.6	298.5	247.6
075D	283.5	323.6	328.5	277.6

Optional flange dimensions (mm)

FIXING HOLE PCD	REGISTER DIAMETER	MOUNTING BOLTS
S	M	
66.7	60 +0/-0.05	M5
80.0	60 (j6)	M5
85.0	70 (j6)	M6

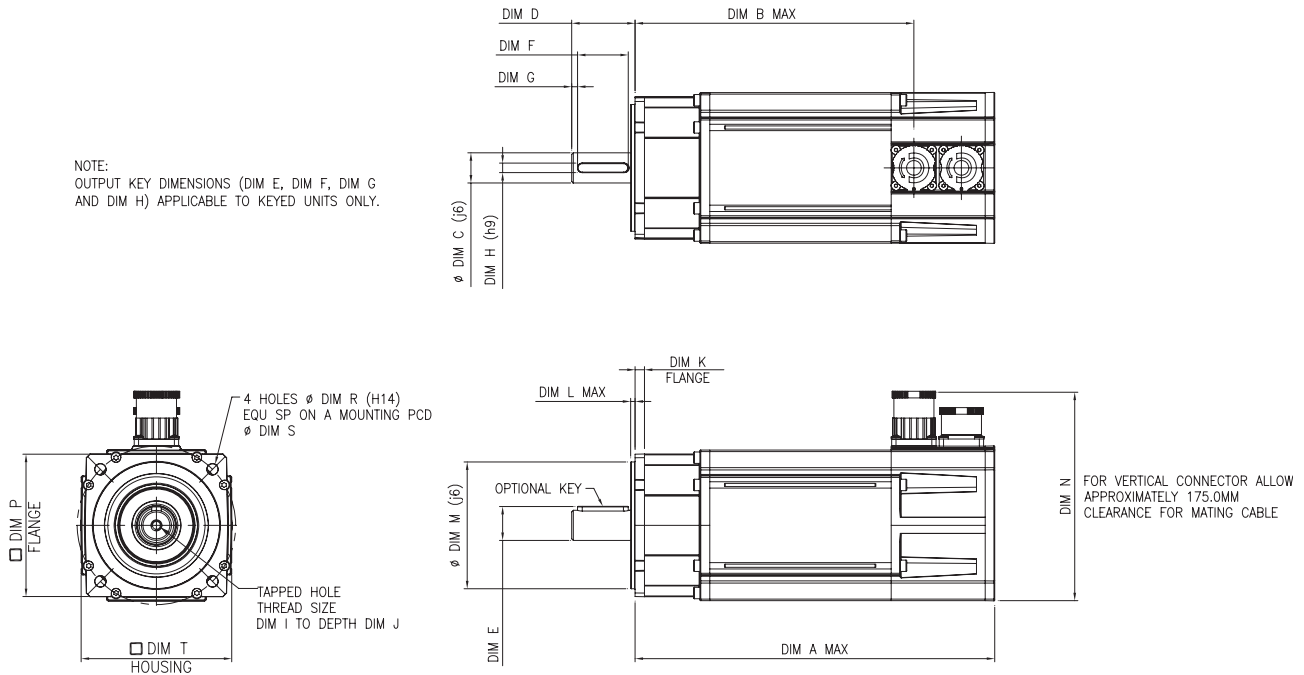
Optional connector height (mm)

CONNECTION TYPE	OVERALL HEIGHT
	N
A	119.0
B	127.0
C	127.0

Shaft Diameter (mm)

	SHAFT DIAMETER	SHAFT LENGTH	KEY HEIGHT	KEY LENGTH	KEY TO SHAFT END	KEY WIDTH	TAPPED HOLE THREAD SIZE	TAPPED HOLE DEPTH
	C	D	E	F	G	H	I	J
11.0 A Std	11 (j6)	23.0	12.5	14.0	4.8	4.0	M4	11.0
14.0 B-D Std	14 (j6)	30.0	15.9	22.0	4.8	5.0	M5	13.5
19.0 Max	19 (j6)	40.0	21.4	32.0	4.8	6.0	M6	17.0

Dimensions (mm) Frame size 095



Standard Motor Dimension (mm) Note: All dimensions shown are at maximum

	UNBRAKED Length		BRAKED Length		FLANGE THICKNESS	REGISTER LENGTH	REGISTER DIAMETER	OVERALL HEIGHT VERTICAL	FLANGE SQUARE	FIXING HOLE DIAMETER	FIXING HOLE PCD	MOTOR HOUSING	MOUNTING BOLTS
	A	B	A	B									
095A	227.8	176.9	272.8	221.9	5.95	2.9	80.0	132.5	90.0	7.0	100.0	95.0	M6
095B	257.8	206.9	302.8	251.9									
095C	287.8	236.9	332.8	281.9									
095D	317.8	266.9	362.8	311.9									
095E	347.8	296.9	392.8	341.9									

Optional flange motor dimensions (mm)

	UNBRAKED LENGTH		BRAKED LENGTH	
	A	B	A	B
095A	202.7	151.8	247.7	196.8
095B	232.7	181.8	277.7	226.8
095C	262.7	211.8	307.7	256.8
095D	292.7	241.8	337.7	285.8
095E	322.7	270.8	367.7	315.8

Optional flange dimensions (mm)

FIXING HOLE PCD	REGISTER DIAMETER	MOUNTING BOLTS
S	M	
98.43	73.025 +0/-0.05	M6
115.0	95 (j6)	M8

Optional connector height (mm)

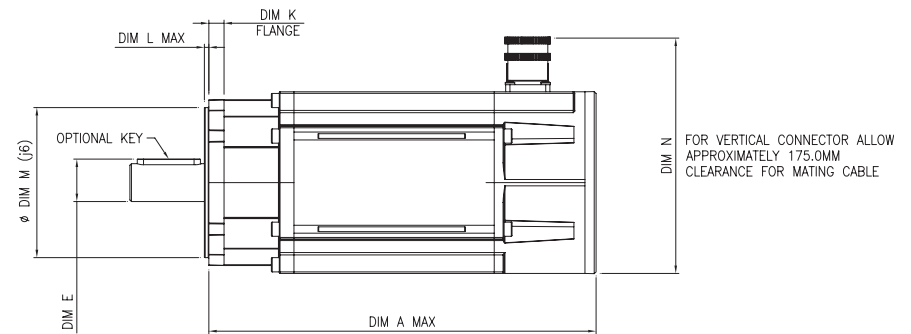
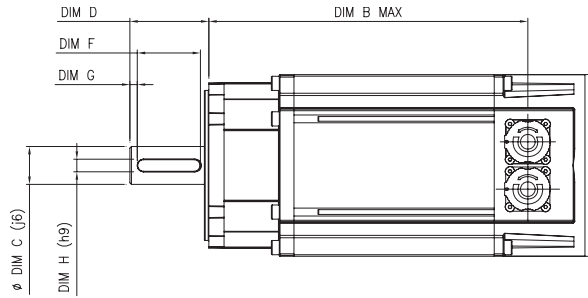
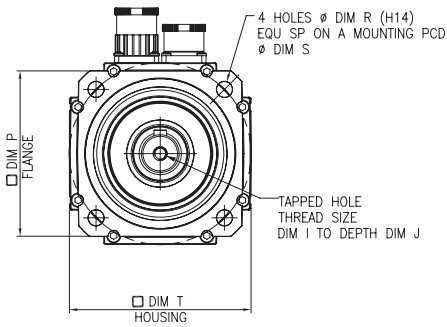
CONNECTION TYPE	OVERALL HEIGHT
	N
A	132.0
B	140.0
C	140.0

Shaft Diameter (mm)

	SHAFT DIAMETER	SHAFT LENGTH	KEY HEIGHT	KEY LENGTH	KEY TO SHAFT END	KEY WIDTH	TAPPED HOLE THREAD SIZE	TAPPED HOLE DEPTH
	C	D	E	F	G	H	I	J
14.0 A Std	14 (j6)	30.0	15.9	22.0	4.8	5.0	M5	13.5
19.0 B-E Std	19 (j6)	40.0	21.4	32.0	4.8	6.0	M6	17.0
22.0 Max	22 (j6)	50.0	24.4	40.0	5.8	6.0	M8	20.0

Dimensions (mm) Frame size 115

NOTE:
OUTPUT KEY DIMENSIONS (DIM E, DIM F, DIM G AND DIM H) APPLICABLE TO KEYPED UNITS ONLY.



Standard Motor Dimension (mm) Note: All dimensions shown are at maximum

	UNBRAKED Length		BRAKED Length		FLANGE THICKNESS	REGISTER LENGTH	REGISTER DIAMETER	OVERALL HEIGHT VERTICAL	FLANGE SQUARE	FIXING HOLE DIAMETER	FIXING HOLE PCD	MOTOR HOUSING	MOUNTING BOLTS
	A	B	A	B	K	L	M	N	P	R	S	T	
115A	246.1	203.0	291.1	248.0	10.1	2.9	95.0	150.0	105.0	10.0	115.0	115.0	M8
115B	276.1	233.0	321.1	278.0									
115C	306.1	263.0	351.1	308.0									
115D	336.1	293.0	381.1	338.0									
115E	366.1	323.0	411.1	368.0									

Optional flange motor dimensions (mm)

	UNBRAKED LENGTH		BRAKED LENGTH	
	A	B	A	B
115A	215.3	172.2	260.3	217.2
115B	245.3	202.2	290.3	247.2
115C	275.3	232.2	320.3	277.2
115D	305.3	262.2	350.3	307.2
115E	335.3	292.2	380.3	337.2

Optional flange dimensions (mm)

FIXING HOLE PCD	REGISTER DIAMETER	MOUNTING BOLTS
S	M	
125.73	110 +0/-0.05	M8
130.0	110 (j6)	M8
145.0	110 (h7)	M8

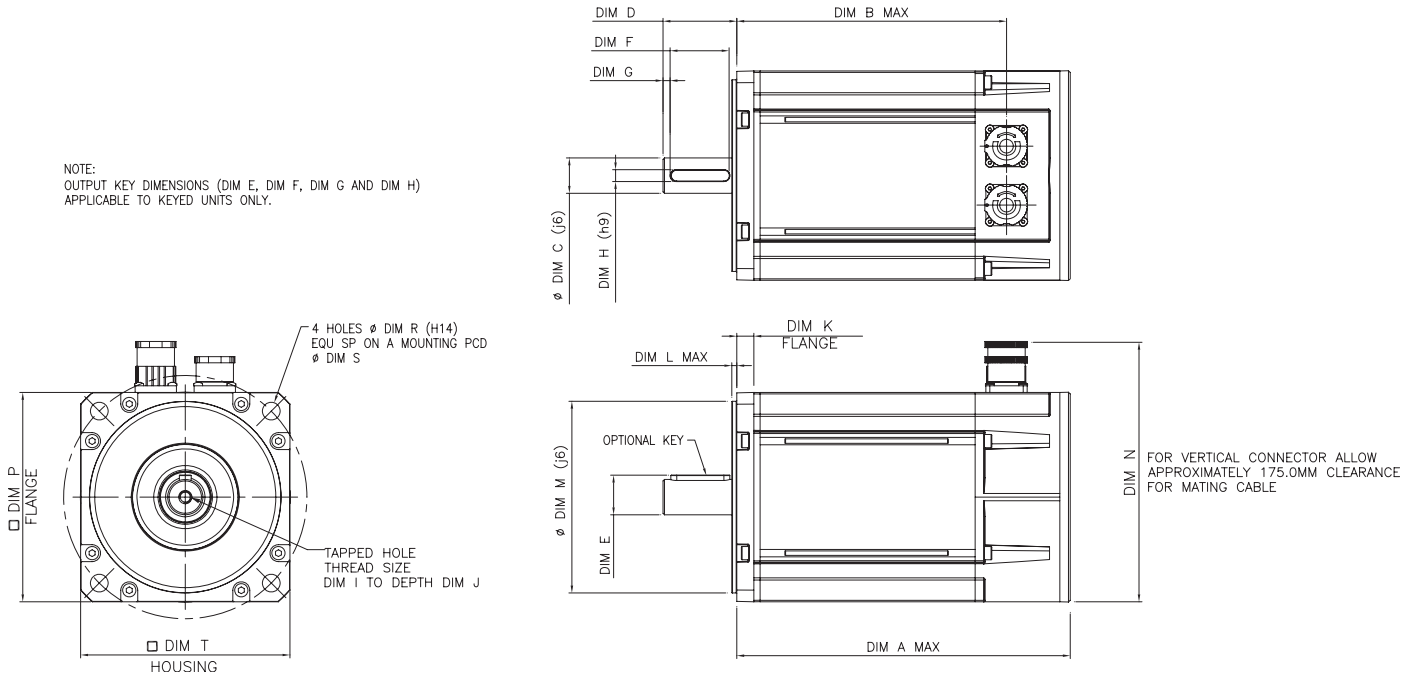
Optional connector height (mm)

CONNECTION TYPE	OVERALL HEIGHT
	N
A	149.5
B	157.5
C	157.5

Shaft Diameter (mm)

	SHAFT DIAMETER	SHAFT LENGTH	KEY HEIGHT	KEY LENGTH	KEY TO SHAFT END	KEY WIDTH	TAPPED HOLE THREAD SIZE	TAPPED HOLE DEPTH
	C	D	E	F	G	H	I	J
19.0 A-C std	19 (j6)	40.0	21.4	32.0	4.8	6.0	M6	17.0
22.0 Opt	22 (j6)	50.0	24.4	40.0	5.8	6.0	M8	20.0
24.0 D-E Std	24 (j6)	50.0	26.9	40.0	5.8	8.0	M8	20.0
28.0 Opt	28 (j6)	60.0	30.9	50.0	5.8	8.0	M10	23.0
32.0 Max	32 (k6)	80.0	34.9	70.0	5.8	10.0	M12	29.0

Dimensions (mm) Frame size 142



Standard Motor Dimension (mm) Note: All dimensions shown are at maximum

	UNBRAKED Length		BRAKED Length		FLANGE THICKNESS	REGISTER LENGTH	REGISTER DIAMETER	OVERALL HEIGHT VERTICAL	FLANGE SQUARE	FIXING HOLE DIAMETER	FIXING HOLE PCD	MOTOR HOUSING	MOUNTING BOLTS
	A	B	A	B									
142A	227.1	184.0	272.1	229.0	12.1	3.5	130.0	177.0	142.0	12.0	165.0	142.0	M10
142B	257.1	214.0	302.1	259.0									
142C	287.1	244.0	332.1	289.0									
142D	317.1	274.0	362.1	319.0									
142E	347.1	304.0	392.1	349.0									

Optional flange motor dimensions (mm)

	UNBRAKED LENGTH		BRAKED LENGTH	
	A	B	A	B
142A	277.3	234.2	322.3	279.2
142B	307.3	264.2	352.3	309.2
142C	337.3	294.2	382.3	339.2
142D	367.3	324.2	412.3	369.2
142E	397.3	354.2	442.3	399.2

Optional flange dimensions (mm)

FIXING HOLE PCD	REGISTER DIAMETER	MOUNTING BOLTS
S	M	
149.23	114.3 +0/-0.076	M8

Optional connector height (mm)

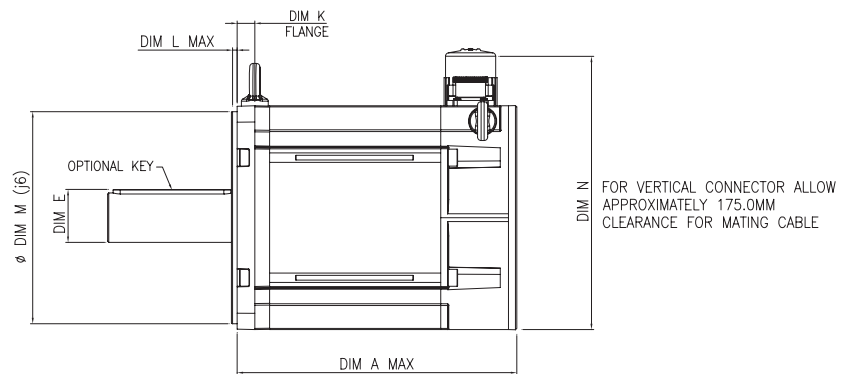
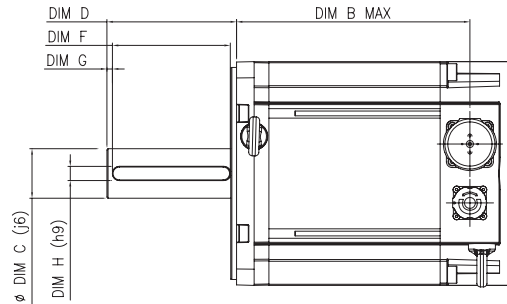
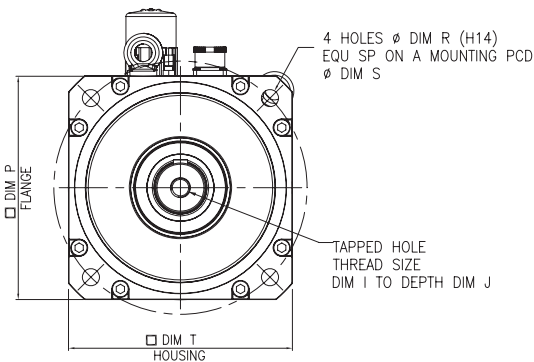
CONNECTION TYPE	OVERALL HEIGHT
	N
A	176.5
B	184.5
C	184.5

Shaft Diameter (mm)

	SHAFT DIAMETER	SHAFT LENGTH	KEY HEIGHT	KEY LENGTH	KEY TO SHAFT END	KEY WIDTH	TAPPED HOLE THREAD SIZE	TAPPED HOLE DEPTH
	C	D	E	F	G	H	I	J
22.0 Opt	22 (j6)	50.0	24.4	40.0	5.8	6.0	M8	20.0
24.0 A-E Std	24 (j6)	50.0	26.9	40.0	5.8	8.0	M8	20.0
28.0 Opt	28 (j6)	60.0	30.9	50.0	5.8	8.0	M10	23.0
32.0 Max	32 (k6)	80.0	34.9	70.0	5.8	10.0	M12	29.0

Dimensions (mm) Frame size 190

NOTE:
OUTPUT KEY DIMENSIONS (DIM E, DIM F, DIM G AND DIM H)
APPLICABLE TO KEYED UNITS ONLY.



Standard Motor Dimension (mm) Note: All dimensions shown are at maximum

	UNBRAKED Length		BRAKED Length		FLANGE THICKNESS	REGISTER LENGTH	REGISTER DIAMETER	OVERALL HEIGHT VERTICAL	FLANGE SQUARE	FIXING HOLE DIAMETER	FIXING HOLE PCD	MOTOR HOUSING	MOUNTING BOLTS
	A	B	A	B									
190A	238.3	199.2	319.2	280.1	15.5	4.0	180.0	233.0	190.0	14.5	215.0	190.0	M12
190B	265.2	226.1	346.1	307.0									
190C	292.2	253.1	373.1	334.0									
190D	319.1	280.0	400.0	360.9									
190E	346.1	307.0	427.0	387.9									
190F	373.0	333.9	453.9	414.8									
190G	400.0	360.9	480.9	441.8									
190H	426.9	387.8	507.8	468.7									

Optional connector height (mm)

CONNECTION TYPE	OVERALL HEIGHT
	N
A	246.0
B	253.5
C	253.5

Shaft Diameter (mm)

	SHAFT DIAMETER	SHAFT LENGTH	KEY HEIGHT	KEY LENGTH	KEY TO SHAFT END	KEY WIDTH	TAPPED HOLE THREAD SIZE	TAPPED HOLE DEPTH
	C	D	E	F	G	H	I	J
32.0 A-H Std	32 (k6)	80.0	34.9	70.0	5.8	10.0	M12	29.0
38.0 Opt	38 (k6)	80.0	40.9	70.0	5.8	10.0	M12	29.0
42.0 Max	42(k6)	110.0	45.0	100.0	5.8	12.0	M16	37.0

Motor Selection

Motor de-rating – Any adverse operating conditions require that the motor performance be de-rated. These conditions include; ambient temperature above 40°C, motor mounting position, drive switching frequency or the drive being oversized for the motor.

Ambient temperatures – The ambient temperature around the motor must be taken into account. For ambient temperatures above 40°C the torque must be de-rated using the following formula as a guideline. (Note: Only applies to 2000/3000rpm motors and assumes copper losses dominate)

$$\text{New de-rated torque} = \text{Specified torque} \times \sqrt{[1 - (\text{Ambient temperature} - 40) / (100)]}$$

For example with an ambient temperature of 76°C the new de-rated torque will be 0.8 x specified torque.

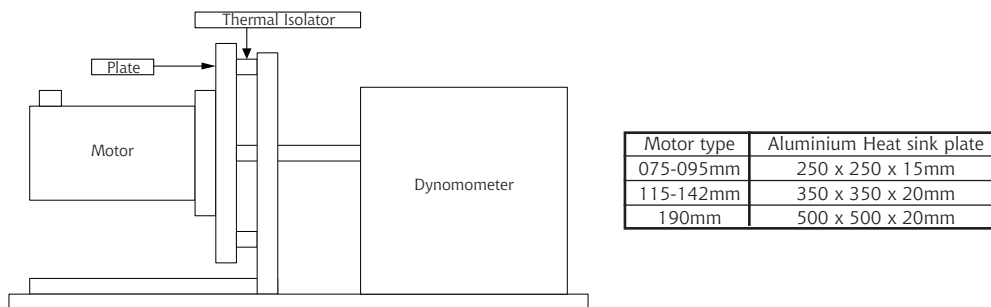
Mounting arrangements – The motor torque must be de rated if the motor mounting surface is heated from an external source, such as a gearbox. The motor is connected to a poor thermal conductor. The motor is mounted with the connectors on the side or vertical. The motor is in a confined space with restricted air flow.

Drive switching frequency – Most Unidrive SP nominal current ratings are reduced for the higher switching frequencies see Unidrive SP manual for details.

See the table below for the motor de rate factors. These figures are for guidance only.
(Note: Only applies to motors up to 3000rpm and assumes copper losses dominate)

Motor de rate factors								
Switching frequency	Motor type/frame size							
	075	095	115		142		190	
	A-D	A-E	A-C	D-E	A-C	D-F	A-B	C-H
3kHz	0.93	0.88	0.89	0.84	0.87	0.81	0.98	N/A
4kHz	0.94	0.91	0.91	0.87	0.91	0.86	0.99	0.55
6kHz	0.95	0.93	0.93	0.90	0.94	0.89	0.99	0.77
8kHz	0.98	0.97	0.97	0.95	0.97	0.96	1	0.90
12/16kHz	1	1	1	1	1	1	1	1

Thermal test conditions – The performance data shown has been recorded under the following conditions. Ambient temperature 20°C, with the motor mounted on a thermally isolated aluminum plate as shown below.



Thermal protection – Thermistor protection (145°C) is built into the motor windings and gives an indication of serious overheating problems. The installer must connect the thermistor to the drive, failure to do so will invalidate the motor warranty in respect of a burnt out winding.

Environmental conditions – Any liquids or gases that may come into contact with the motor must be confirmed to ensure compliance with the correct international standards.

Ordering Information

Use the information below in the illustration to create an order code for a **Unimotor** .

The details in the band are an example of an order reference. (Std = Standard selection Opt = Optional selection).

095	U	2	B	30	1	V
Frame Size	Motor voltage*	Peak torque selection*	Stator Length*	Rated Speed*	Brake*	Connection Type*
055	E = 220V	2 = Standard peak torque	A	10 = 1000 rpm	0 = Not fitted (Std) 1 = Parking brake fitted 24VDC	A = Power and Signal 90° fixed
075	U = 480V		B	20 = 2000 rpm		
095	W = 575V	P = High peak torque	C	25 = 2500 rpm	5 = High energy dissipation X = Special	B = Power and Signal 90° rotatable C = Power 90° rotatable and Signal vertical V = Power and Signal vertical* (Std) X = Special
115			D	30 = 3000 rpm (Std)		
142			E	40 = 4000 rpm		
190			F	45 = 4500 rpm		
			G	50 = 5000 rpm		
			H	60 = 6000 rpm		

* Not available on some frame sizes. Please consult Drive Centre or Distributor for details.

** Available on the 055 frame motor only

*** Optional PCD's will have a different register diameter from the standard motors. Please consult Drive Centre or Distributors for details.

A CD A 100 190

Output Shaft	Feedback Device	Inertia	PCD***	Shaft Diameter***
A = Key (Std) B = Plain shaft X = Special	AE = Resolver AR = Resolver size 15** CD = Encoder 4096 CP = Encoder 4096** MD = Encoder 2048 MP = Encoder 2048** PD = Sincos SLM only RA = Sincos Multi turn SRM50 SA = Sincos Single turn SRS50 TL = Sincos Multi turn SKM36** UL = Sincos Single turn SKS36** XX = Special	A = Standard inertia B = High	055 frame only	
			063 Std	09.0 Opt
			070 Opt	11.0 A-C Std 14.0 Max
			075 frame only	
			075 Std	11.0 A Std
			080 Opt	14.0 B-D Std
			085 Opt	19.0 Max
			095 frame only	
			100 Std	14.0 A Std
			098 Opt	19.0 B-E Std
115 Opt	22.0 Max			
115 frame only				
115 Std	19.0 A-C Std			
130 Opt	24.0 D-E Std			
145 Opt	32.0 Max			
142 frame only				
165 Std	24.0 A-E Std			
149 Opt	32.0 Max			
190 frame only				
215 Std	32.0 A-H Std 42.0 Max			

Unimotor For 3 Phase VPWM Drives 200-240Vrms

$\Delta t = 100^\circ\text{C}$ winding 40°C maximum ambient

All data subject to +/-10% tolerance

Motor Frame Size (mm)	055E2			075E2				095E2				
Frame Length	A	B	C	A	B	C	D	A	B	C	D	E
Continuous Stall Torque (Nm)	0.75	1.40	2.11	1.2	2.2	3.1	3.9	2.3	4.3	5.9	7.5	9.0
Standard (2) Peak Torque selection max (Nm)	2.75	5.50	8.25	3.6	6.6	9.3	11.7	6.9	12.9	17.7	22.5	27.0
High (P) Peak Torque selection max (Nm)	N/A	N/A	N/A	6	11	15.5	19.5	10.4	19.4	26.6	33.8	40.5
Standard Inertia (kgcm ²)	0.12	0.23	0.34	0.7	1.2	1.6	2.0	1.8	2.9	4.0	5.1	6.2
High Inertia (kgcm ²)				1.1	1.5	2.0	2.4	3.7	4.8	5.9	7.0	8.1
Winding Thermal Time Const. (sec)				81	74	94	100	172	168	183	221	228
Maximum Cogging (Nm)	0.03	0.05	0.07	0.02	0.03	0.04	0.05	0.03	0.06	0.08	0.10	0.13
Standard motor weight unbraked (kg)	1.20	1.50	1.80	3.60	4.40	5.20	6.00	5.10	6.30	7.50	8.70	9.90
Standard motor weight braked (kg)	1.60	1.90	2.20	4.10	4.90	5.70	6.50	5.70	6.90	8.70	9.30	10.50
Rated Speed 2000 (rpm)	K_t (Nm/A) = K_e (V/krpm) =			K_t (Nm/A) = 1.40 K_e (V/krpm) = 85.50								
Rated Torque (Nm)	C/D	C/D	C/D	1.1	2.1	3.0	3.8	2.2	4.0	5.5	6.9	8.2
Stall Current (A)				0.9	1.6	2.3	2.8	1.7	3.1	4.3	5.4	6.5
Rated Power (kW)				0.23	0.44	0.63	0.80	0.46	0.84	1.15	1.45	1.72
R (ph-ph) (Ohms)				45.8	15.3	8.5	5.72	19.4	6.2	3.16	2.31	1.71
L (ph-ph) (mH)				98.8	43.4	27.9	20.2	59.2	25.8	16.0	12.6	10.1
Rated Speed 3000 (rpm)	K_t (Nm/A) = K_e (V/krpm) =			K_t (Nm/A) = 0.93 K_e (V/krpm) = 57.00								
Rated Torque (Nm)	0.60	1.20	1.80	1.1	2.0	2.8	3.5	2.0	3.9	5.4	6.8	8.1
Stall Current (A)	0.98	1.68	2.46	1.3	2.4	3.4	4.2	2.5	4.7	6.4	8.1	9.7
Rated Power (kW)	0.21	0.43	0.64	0.35	0.63	0.88	1.10	0.63	1.23	1.70	2.14	2.54
R (ph-ph) (Ohms)	30.0	14.7	9.6	18.9	6.26	3.50	2.38	8.03	2.68	1.57	1.03	0.77
L (ph-ph) (mH)	67.3	43.0	30.9	42.5	18.4	11.9	8.82	25.6	12.0	7.91	5.60	4.65
Rated Speed 4000 (rpm)	K_t (Nm/A) = K_e (V/krpm) =			K_t (Nm/A) = 0.72 K_e (V/krpm) = 44.00								
Rated Torque (Nm)	C/D	C/D	C/D	1.0	1.7	2.3	2.9	1.8	3.0	4.0	4.9	5.7
Stall Current (A)				1.7	3.1	4.4	5.5	3.2	6.0	8.2	10.5	12.5
Rated Power (kW)				0.42	0.71	0.96	1.21	0.75	1.26	1.68	2.05	2.39
R (ph-ph) (Ohms)				10.2	3.39	1.92	1.48	5.15	1.64	0.92	0.62	0.43
L (ph-ph) (mH)				24.6	10.8	7.14	5.42	15.5	6.77	4.61	3.46	2.54
Rated Speed 6000 (rpm)	K_t (Nm/A) = K_e (V/krpm) =			K_t (Nm/A) = 0.47 K_e (V/krpm) = 28.50								
Rated Torque (Nm)	0.48	0.91	1.35	0.9	1.6	2.1	2.6	1.3	2.1	2.8	C/D	C/D
Stall Current (A)	1.66	3.33	4.80	2.6	4.7	6.6	8.3	4.9	9.2	12.6		
Rated Power (kW)	0.33	0.63	0.99	0.57	1.01	1.32	1.63	0.82	1.32	1.76		
R (ph-ph) (Ohms)	9.6	3.8	2.5	4.5	1.49	0.95	0.65	2.01	0.67	0.35		
L (ph-ph) (mH)	21.5	11.1	8.1	10.7	4.73	3.10	2.33	6.41	3.01	1.77		

For 3 Phase VPWM Drives 200-240Vrms

Stall torque, rated torque and power relate to maximum continuous operation tested in a 20°C ambient at 12kHz drive switching frequency.
All other figures relate to a 20°C motor temperature.
Maximum intermittent winding temperature is 140°C.

115E2					142E2						190E2							
A	B	C	D	E	A	B	C	D	E	F	A	B	C	D	E	F	G	H
3.5	6.6	9.4	12.4	15.3	5.7	10.8	15.3	19.8	23.4	C/D	C/D	21.8	C/D	41.1	C/D	58.7	C/D	73.2
10.5	19.8	28.2	37.2	45.9	17.1	32.4	45.9	59.4	70.2			65.4		123.0		176.0		219.0
14	26.4	37.6	49.6	61.2	22.8	43.2	61.2	79.2	93.6		N/A	N/A	N/A	N/A	N/A	N/A	N/A	N/A
4.4	6.7	9.0	11.4	13.8	9.0	15.6	22.2	28.8	35.4			48.7		86.4		123.1		161.8
9.5	11.8	14.1	16.6	18.9	23.3	29.9	36.5	43.1	49.7			93.9		131.6		168.3		207.0
175	185	198	217	241	213	217	275	301	365			240		242		319		632
0.06	0.10	0.14	0.18	0.21	0.09	0.16	0.23	0.30	0.35			0.30		0.54		0.72		0.99
7.80	9.70	11.60	13.50	15.40	10.00	13.30	16.10	18.90	21.70			25.30		33.90		42.50		51.30
9.00	10.90	12.80	14.70	17.20	12.20	15.00	17.80	19.60	23.40			27.30		35.90		44.50		53.10
3.2	6.1	8.7	10.8	14.0	5.3	10.3	14.6	18.4	21.3	C/D	C/D	20.0	C/D	36.9	C/D	50.4	C/D	C/D
2.5	4.8	6.8	8.9	11.0	4.1	7.8	11.0	14.2	16.8			15.6		29.4		42.0		
0.67	1.28	1.82	2.26	2.93	1.11	2.16	3.06	3.85	4.46			4.19		7.73		10.6		
9.09	2.82	1.51	0.99	0.82	4.28	1.33	0.75	0.45	0.32			0.50		0.15		0.10		
47.3	20.6	13.1	9.54	7.86	33.7	15.1	10.3	6.96	5.58			7.98		3.32		2.73		
3.0	5.5	8.1	10.4	12.6	4.9	9.0	12.2	15.8	N/A	N/A	C/D	19.2	C/D	33.0	C/D	C/D	C/D	N/A
3.8	7.1	10.2	13.4	16.5	6.2	11.7	16.5	21.3				23.5		44.2				
0.94	1.73	2.54	3.27	3.96	1.54	2.83	3.83	4.96				6.03		10.4				
4.01	1.30	0.73	0.47	0.37	1.90	0.59	0.31	0.20				0.25		0.08				
20.1	9.16	6.07	4.26	3.49	15.0	6.85	4.20	1.94				3.98		1.87				
2.5	4.7	6.3	7.5	C/D	3.6	7.0	C/D	N/A	N/A	N/A	N/A	N/A	N/A	N/A	N/A	N/A	N/A	N/A
4.9	9.2	13.1	17.3		8.0	15.0												
1.05	1.97	2.64	3.14		1.51	2.93												
2.62	0.82	0.44	0.29		1.20	0.36												
12.6	5.48	3.57	2.53		9.45	4.08												
2.2	4.0	C/D	N/A	N/A	2.9	C/D	N/A	N/A	N/A	N/A	N/A	N/A	N/A	N/A	N/A	N/A	N/A	N/A
7.5	14.1				12.2													
1.38	2.51				1.82													
0.96	0.30				0.49													
4.80	2.09				3.96													

Unimotor Servo motor for 3 Phase VPWM Drives 380-480Vrms

$\Delta t = 100^\circ\text{C}$ winding 40°C maximum ambient

All data subject to +/-10% tolerance

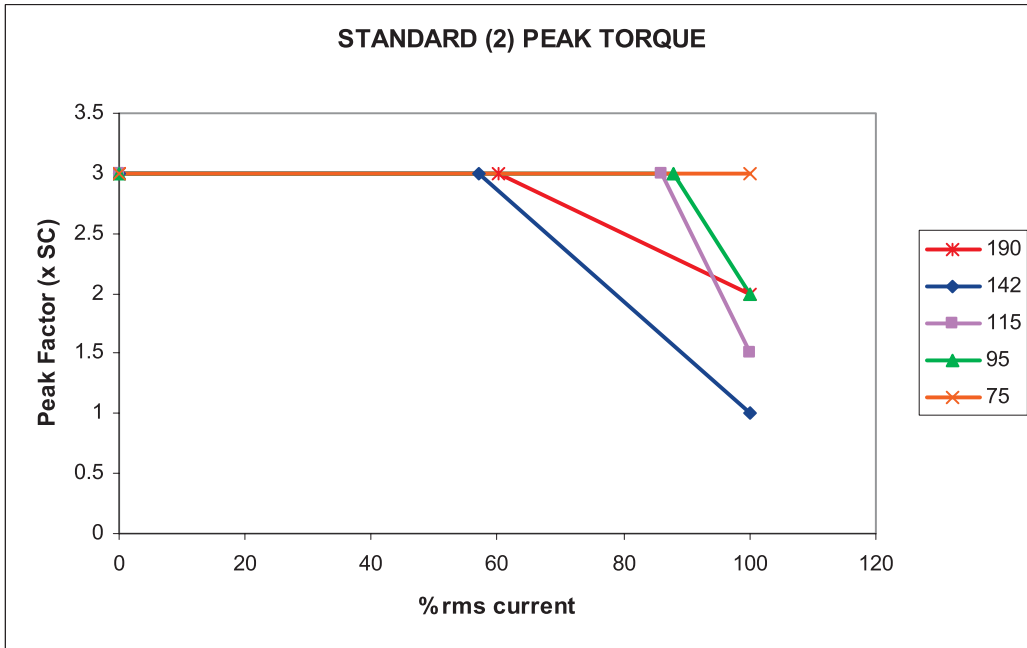
Motor Frame Size (mm)	055U2			075U2				095U2				
Frame Length	A	B	C	A	B	C	D	A	B	C	D	E
Continuous Stall Torque (Nm)	0.75	1.40	2.11	1.2	2.2	3.1	3.9	2.3	4.3	5.9	7.5	9.0
Standard (2) Peak Torque selection max (Nm)	2.75	5.50	8.25	3.6	6.6	9.3	11.7	6.9	12.9	17.7	22.5	27.0
High (P) Peak Torque selection max (Nm)	N/A	N/A	N/A	6	11	15.5	19.5	10.4	19.4	26.6	33.8	40.5
Standard Inertia (kgcm ²)	0.12	0.23	0.34	0.7	1.2	1.6	2.0	1.8	2.9	4.0	5.1	6.2
High Inertia (kgcm ²)				1.1	1.5	2.0	2.4	3.7	4.8	5.9	7.0	8.1
Winding Thermal Time Const. (sec)				81	74	94	100	172	168	183	221	228
Maximum Cogging (Nm)	0.03	0.05	0.07	0.02	0.03	0.04	0.05	0.03	0.06	0.08	0.10	0.13
Standard motor weight unbraked (kg)	1.20	1.50	1.80	3.60	4.40	5.20	6.00	5.10	6.30	7.50	8.70	9.90
Standard motor weight braked (kg)	1.60	1.90	2.20	4.10	4.90	5.70	6.50	5.70	6.90	8.70	9.30	10.50
Rated Speed 2000 (rpm)	K_t (Nm/A) = K_e (V/krpm) =			K_t (Nm/A) = 2.40 K_e (V/krpm) = 147.00								
Rated Torque (Nm)	C/D	C/D	C/D	1.1	2.1	3.0	3.8	2.2	4.0	5.5	6.9	8.2
Stall Current (A)				0.5	1.0	1.3	1.7	1.0	1.8	2.5	3.2	3.8
Rated Power(kW)				0.23	0.44	0.63	0.80	0.46	0.84	1.15	1.45	1.72
R (ph-ph) (Ohms)				144	48.2	25.0	15.7	59.0	17.0	9.90	6.00	4.30
L (ph-ph) (mH)				214	99.2	59.2	44.7	131	54.5	36.5	25.6	18.9
Rated Speed 3000 (rpm)	K_t (Nm/A) = K_e (V/krpm) =			K_t (Nm/A) = 1.60 K_e (V/krpm) = 98.00								
Rated Torque (Nm)	0.60	1.20	1.80	1.1	2.0	2.8	3.5	2.0	3.9	5.4	6.8	8.1
Stall Current (A)	0.98	0.95	1.34	0.8	1.4	2.0	2.5	1.5	2.7	3.7	4.7	5.7
Rated Power(kW)	0.21	0.43	0.64	0.35	0.63	0.88	1.10	0.63	1.23	1.70	2.14	2.54
R (ph-ph) (Ohms)	30.0	46.0	32.0	60.8	20.1	10.5	7.5	24.5	6.80	4.00	2.50	2.00
L (ph-ph) (mH)	67.3	132.3	103.0	98.4	41.8	27.6	19.7	57.9	24.3	15.5	10.9	8.50
Rated Speed 4000 (rpm)	K_t (Nm/A) = K_e (V/krpm) =			K_t (Nm/A) = 1.20 K_e (V/krpm) = 73.50								
Rated Torque (Nm)	C/D	C/D	C/D	1.0	1.7	2.3	2.9	1.8	3.0	4.0	4.9	5.7
Stall Current (A)				1.0	1.9	2.6	3.3	2.0	3.6	5.0	6.3	7.5
Rated Power(kW)				0.42	0.71	0.96	1.21	0.75	1.26	1.68	2.05	2.39
R (ph-ph) (Ohms)				36.8	10.5	6.30	4.20	12.7	4.08	2.10	1.50	1.03
L (ph-ph) (mH)				54.9	24.8	14.9	10.8	31.5	13.6	8.50	6.30	4.80
Rated Speed 6000 (rpm)	K_t (Nm/A) = K_e (V/krpm) =			K_t (Nm/A) = 0.80 K_e (V/krpm) = 49.00								
Rated Torque (Nm)	0.48	0.91	1.35	0.9	1.6	2.1	2.6	1.3	2.1	2.8	C/D	C/D
Stall Current (A)	0.98	1.91	2.68	1.5	2.8	3.9	4.9	2.9	5.4	7.4		
Rated Power(kW)	0.33	0.63	0.99	0.57	1.01	1.32	1.63	0.82	1.32	1.76		
R (ph-ph) (Ohms)	30.0	11.4	8.0	15.0	5.00	2.66	1.90	5.45	1.82	1.05		
L (ph-ph) (mH)	67.3	33.1	25.7	24.0	10.6	6.80	4.80	14.1	6.00	3.80		

Servo motor for 3 Phase VPWM Drives 380-480Vrms

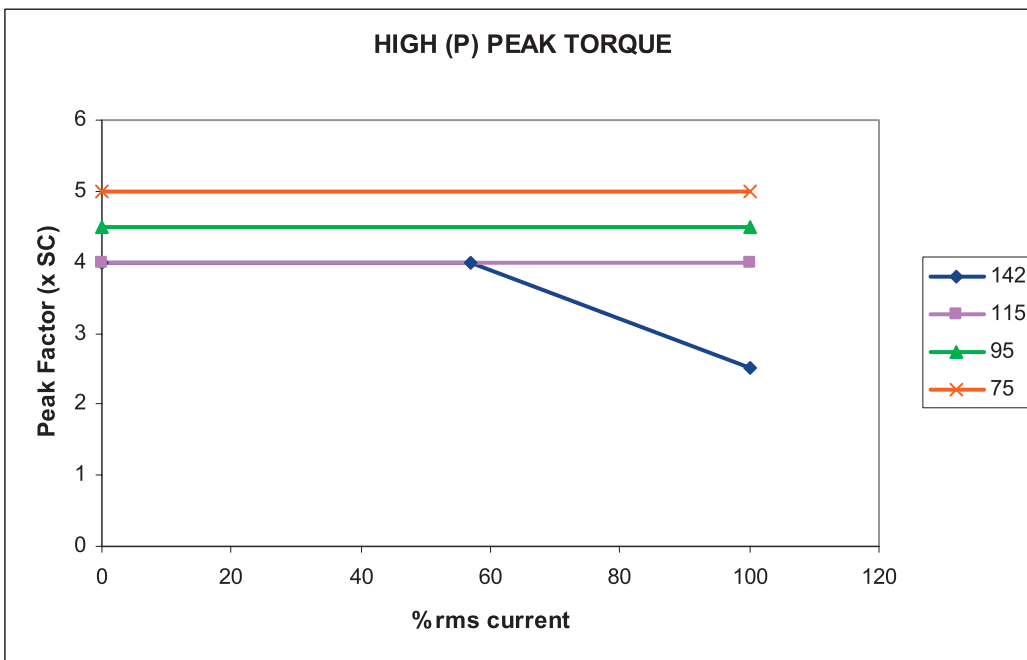
Stall torque, rated torque and power relate to maximum continuous operation tested in a 20°C ambient at 12kHz drive switching frequency.
All other figures relate to a 20°C motor temperature.
Maximum intermittent winding temperature is 140°C.

115U2					142U2						190U2							
A	B	C	D	E	A	B	C	D	E	F	A	B	C	D	E	F	G	H
3.5	6.6	9.4	12.4	15.3	5.7	10.8	15.3	19.8	23.4	C/D	9.6	21.8	31.1	41.1	50.6	58.7	66.0	73.2
10.5	19.8	28.2	37.2	45.9	17.1	32.4	45.9	59.4	70.2		28.8	65.4	93.3	123	151.6	176	198.0	219
14	26.4	37.6	49.6	61.2	22.8	43.2	61.2	79.2	93.6		N/A	N/A	N/A	N/A	N/A	N/A	N/A	N/A
4.4	6.7	9.0	11.4	13.8	9.0	15.6	22.2	28.8	35.4		29.9	48.7	67.5	86.4	105.0	123.1	142.9	161.8
9.5	11.8	14.1	16.6	18.9	23.3	29.9	36.5	43.1	49.7		75.1	93.9	112.7	131.6	150.2	168.3	188.1	207
175	185	198	217	241	213	217	275	301	365		217	240	241	242	281	319	476	632
0.06	0.10	0.14	0.18	0.21	0.09	0.16	0.23	0.30	0.35		0.12	0.30	0.40	0.54	0.66	0.72	0.86	0.99
7.80	9.70	11.60	13.50	15.40	10.00	13.30	16.10	18.90	21.70		21.00	25.30	29.60	33.90	38.20	42.50	46.80	51.30
9.00	10.90	12.80	14.70	17.20	12.20	15.00	17.80	19.60	23.40		23.00	27.30	31.60	35.90	40.20	44.50	48.80	53.10
3.2	6.1	8.7	10.8	14.0	5.3	10.3	14.6	18.4	21.3	C/D	9.3	20.0	28.4	36.9	43.8	50.4	53.0	54.7
1.5	2.8	4.0	5.2	6.4	2.4	4.5	6.4	8.3	9.8		4.0	9.1	13.0	17.2	21.1	24.5	27.5	30.5
0.67	1.28	1.82	2.26	2.93	1.11	2.16	3.06	3.85	4.46		1.90	4.19	5.90	7.73	9.20	10.6	11.1	11.5
27.8	8.55	4.55	2.96	2.17	12.5	3.60	2.10	1.35	0.98		6.15	1.80	0.83	0.56	0.39	0.33	0.30	0.23
94.6	40.5	25.7	18.6	14.7	58.0	29.8	18.7	13.6	10.7		52.90	28.10	15.00	13.0	8.68	8.90	6.73	6.30
3.0	5.5	8.1	10.4	12.6	4.9	9.0	12.2	15.8	18.0	C/D	8.7	19.2	25.0	33.0	34.0	35.0	36.0	36.8
2.2	4.2	5.9	7.8	9.6	3.6	6.8	9.6	12.4	14.7		6.0	13.7	19.4	25.7	31.6	36.7	41.3	45.8
0.94	1.73	2.54	3.27	3.96	1.54	2.83	3.83	4.96	5.65		2.73	6.03	7.85	10.4	10.7	11.0	11.3	11.6
12.6	3.86	2.02	1.40	1.10	5.63	1.72	0.94	0.61	0.44		2.73	0.79	0.41	0.30	0.17	0.14	0.13	0.09
43.1	18.6	11.4	8.60	7.40	31.0	13.3	8.30	6.10	4.80		23.50	13.20	7.35	6.11	3.86	3.60	2.99	2.46
2.5	4.7	6.3	7.5	8.7	3.6	7.0	8.9	10.7	12.2	N/A	C/D	C/D	C/D	C/D	N/A	N/A	N/A	N/A
3.0	5.5	7.9	10.4	12.8	4.8	9.0	12.8	16.5	19.5									
1.05	1.97	2.64	3.14	3.64	1.51	2.93	3.73	4.48	5.11									
6.91	2.14	1.16	0.73	0.57	3.12	1.00	0.53	0.35	0.24									
23.5	10.2	6.60	4.70	3.90	17.6	7.50	4.70	3.60	2.70									
2.2	4.0	C/D	C/D	N/A	2.9	4.5	C/D	C/D	N/A	N/A	N/A	N/A	N/A	N/A	N/A	N/A	N/A	N/A
4.4	8.3				7.2	13.5												
1.38	2.51				1.82	2.83												
3.10	0.97				1.42	0.46												
15.5	4.81				7.72	3.44												

Peak Torque Information



Peak Torque defined for a maximum period of 250 ms, RMS 3000 rpm, $\Delta T_{max} = 100^{\circ}C$, $40^{\circ}C$ ambient.
SC = Stall Current



Peak Torque defined for a maximum period of 250 ms, RMS 3000 rpm, $\Delta T_{max} = 100^{\circ}C$, $40^{\circ}C$ ambient.
SC = Stall Current

Motor Specification

Low Voltage Directive 2006/95/EC

Note: Machinery Directive 89/392/EEC amended to 98/37/EC Low Voltage Directive 73/23/EEC superseded by directive 2006/95/EC on 16/01/07, which specifically excludes electric motors.

EN 60034	General requirements for rotating electrical machinery
EN 60034-1	Duty: S1 Continuous Storage: -15°C to +40°C Operating: Min ambient 0°C; max ambient 40°C Less than 1000M altitude Relative humidity: 90% non condensing
EN 60034-5	Degree of Ingress protection: IP65 (when mounted and connected)
EN 60034-6	Method of cooling: free circulation, free convection
EN 60034-7	Flange mounted: horizontally or vertically
EN 60034-8	Terminal markings: U V W,
EN 60034-11	Thermal protection: PTC thermistor, 145°C on 075-190 motors Thermal protection: PTC thermistor, 150°C on 055 motors
EN 60034-18	Insulation system: Class F 600V, UL number E214439 on 075-190 motors Insulation system: Class F 600V, on 055 motors
EN 60034-25	The design and performance of motors specifically designed for converter supply
EN 60072	Dimensions and output for rotating electrical machines
EN 60072-1	Type N (Customer variants)
ISO1940-1	Balancing: to G6.3, (ISO8821 half key convention)

Standard equipment is not deemed suitable for use in an explosive atmosphere. (ATEX motors are available, please contact your Drive Centre or Distributor for details).

This product has been designed to be operated with Control Techniques Servo drives and must not be put into service unless the machinery into which it is to be incorporated has been declared in conformity with the provisions of the machinery directive.

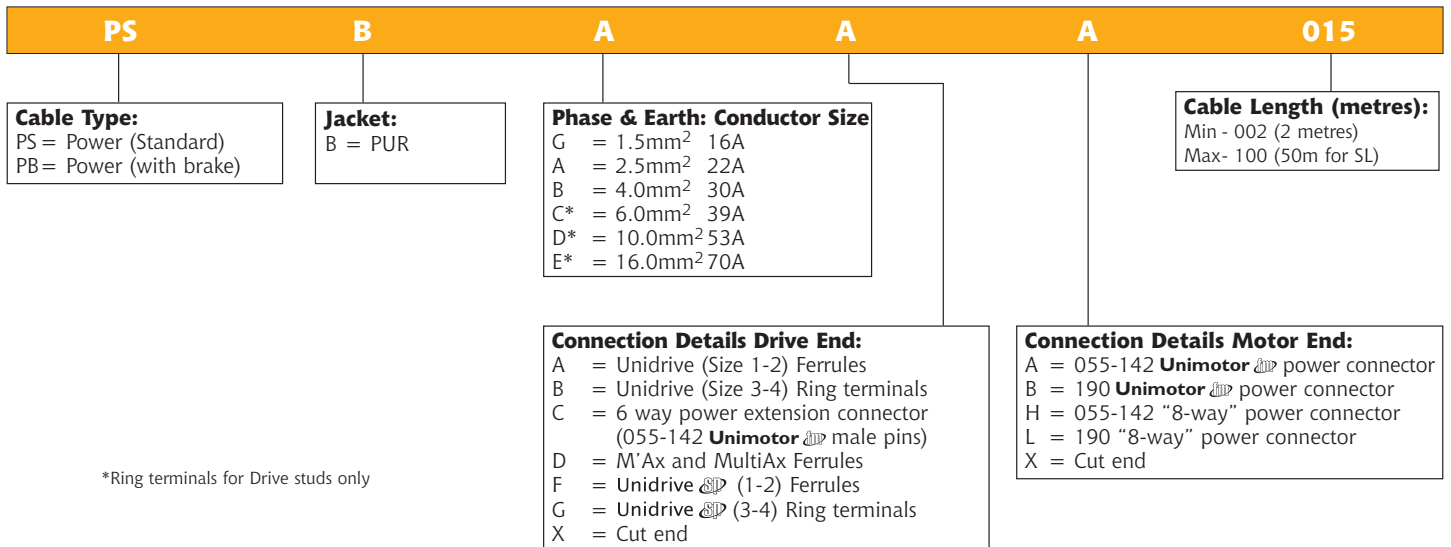
Standard Brake Specification

Motor Frame	Supply Volts	Input Power	Static Torque		Release Time	Moment of Inertia	Backlash
			Standard brake	High energy brake			
Size	VDC	Watts	Nm	Nm	ms nom	kgcm ² *	Degrees**
055	24	6.3	1.8	N/A	22	0.03	0.75
075	24	6.3	2	2.2	22	0.07	1.03
095	24	16	11	12.2	60	0.39	0.94
115	24	16	11	12.2	60	0.44	0.56
142	24	19.5	18	22	75	0.54	0.56
190(A-D)	24	25	38	42	95	3.07	0.77
190(E-H)	24	25	60	67	120	4.95	0.77

*Note 1 kgcm² = 1x10⁻⁴kgm² **Backlash figure will increase with time

- The brakes are intended for parking duty and are not for dynamic or safety use.
- The brake will engage when power is removed.
- Refer to your Drive Centre or Distributor if your application requires dynamic braking in emergency conditions.
- To provide protection to the brake control circuit it is recommended that a diode is connected across the output terminals of the solid state or relay contacts devices.
- Larger torque brakes are available as an option. Please contact your Drive Centre or Distributor for details.
- Figures are shown at 20°C brake temperature. Apply the de rate factor of 0.7 to the standard brake torque figures if motor temperature is above 100°C. The de rate factor does not apply to the High energy brake.

Cable Information



Cable type - PS for motor without brakes, PB for motors with brake.

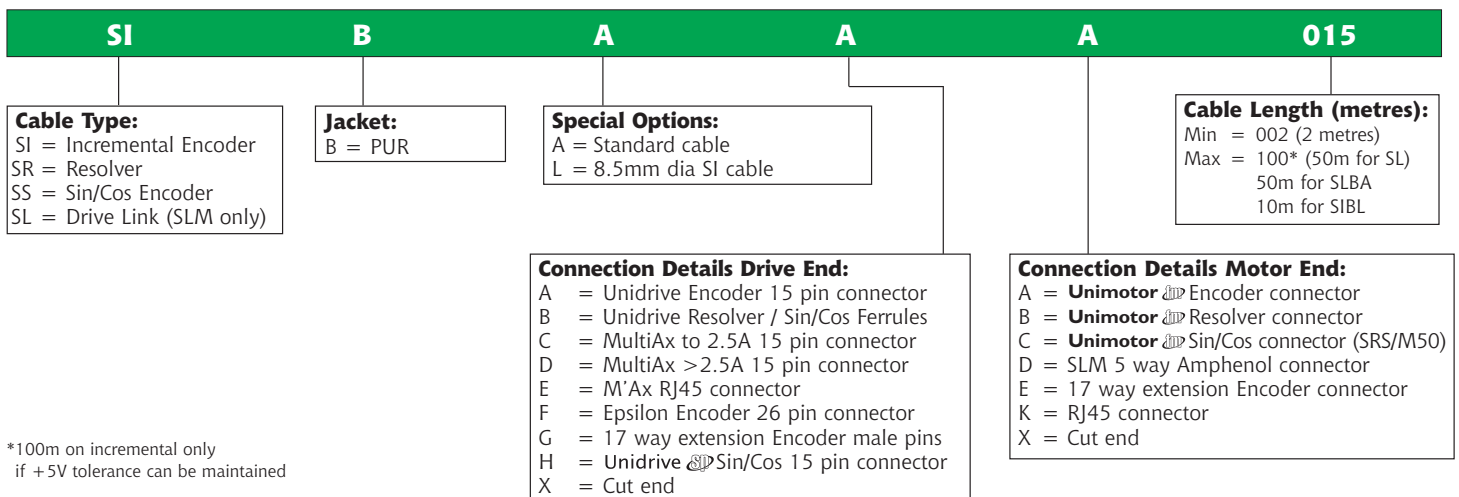
Jacket - B is for a PUR sheath and is the standard selection.

Conductor size - Select the conductor size according to the motors STALL CURRENT. Cables of 6mm² and above will be fitted with ring terminals only. Ratings are for individual cables (not lashed together) in free air temperature up to 40°C - make allowances as appropriate.

Connection detail drive end - Select the correct drive end connection for the drive in use.

Connection detail motor end - Select the correct motor end connection for the motor in use.

Length - Numbers represent the required cable length in metres.



Cable type - Choose the cable type to match the feedback device.

Jacket - B is for a PUR sheath and is the standard selection.

Special options - A is for standard cable. L is for the low cost 8.5mm incremental cable.

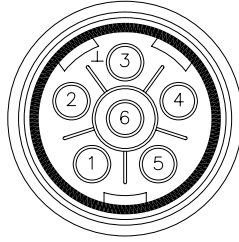
Connection detail drive end - Select the correct drive end connection for the drive in use.

Connection detail motor end - Select the correct motor end connection for the motor feedback device in use.

Length - Numbers represent the required cable length in metres.

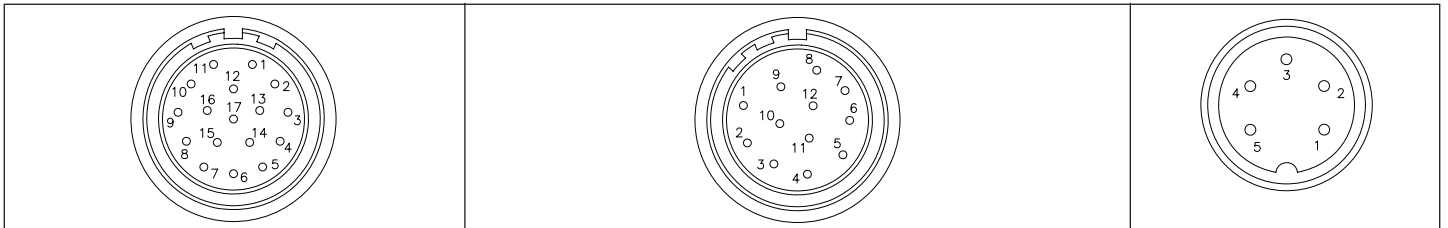
Connection details (viewed from motor Unimotor connector)

Power Plug



	055-142 with brake	055-142 without brake
Pin	Function	Function
1	Phase U (R)	Phase U (R)
2	Phase V (S)	Phase V (S)
3	Earth	Earth
4	Phase W (T)	Phase W (T)
5	Brake	N/C
6	Brake	N/C
Shell	Screen	Screen
	190 with brake	190 without brake
Pin	Function	Function
U	Phase U (R)	Phase U (R)
V	Phase V (S)	Phase V (S)
Ⓣ	Earth	Earth
W	Phase W (T)	Phase W (T)
+	Brake	N/C
-	Brake	N/C
Shell	Screen	Screen

Signal Plugs



	Encoder	Resolver	Sin/Cos	SLM
Pin	Function	Function	Function	Function
1	Thermistor 0V	Excitation high	REF Cos	Comms
2	Thermistor Signal	Excitation low	+ Daten	0V
3	Screen (not required on fm)	Cos high	-Daten	+ 24V
4	S1	Cos low	+ Cos	Screen
5	S1 Inverse	Sin high	+ Sin	Comms
6	S2	Sin low	REF Sin	
7	S2 Inverse	Thermistor	Thermistor	
8	S3	Thermistor	Thermistor	
9	S3 Inverse		Screen	
10	Channel A		0 Volts	
11	Index		-	
12	Index Inverse		+ Volts	
13	Channel A Inverse			
14	Channel B			
15	Channel B Inverse			
16	+ 5V			
17	0 Volts			
Body	Screen		Screen	Screen

Drive & Application Centres

AUSTRALIA

Melbourne Application Centre
A.C.N. 003 815 281
Tel: 613 973 81777
Fax: 613 9729 3200
After Hours: 61 2 9963 5271

Sydney Drive Centre
A.C.N. 003 815 281
Tel: 61 2 9838 7222
Fax: 61 2 9838 7764
After Hours: 61 2 9963 5271

AUSTRIA

Linz Drive Centre
Tel: 43 7229 789480
Fax: 43 7229 7894810
After Hours: 43 7215 3502

BELGIUM

Brussels Drive Centre
Tel: 32 1574 0700
Fax: 32 1574 0799

BRAZIL

Emerson do Brazil Ltda
Tel: 55 11 3618 6569
Fax: 1 905 201 4694
After Hours: 1 800 893 2321

CANADA

Toronto Drive Centre
Tel: 1 905 201 4699
Fax: 1 905 201 4694
After Hours: 1 800 893 2321

Calgary Drive Centre
Tel: 1 403 253 8738
Fax: 1 403 255 4323

CHINA

Shanghai Drive Centre
Tel: 86 21 5426 0668
Fax: 86 21 5426 0669

Beijing Application Centre
Tel: 86 10 856 31122 ext 820
Fax: 86 10 856 35029

ARGENTINA

Euro Techniques SA
Tel: 54 11 4331 7820
Email: eurotech@eurotechsa.com.ar

BAHRAIN

Iftikhar Electrical Est.
Tel: 973 271 1116
Email: ieeepower@batelco.com.bh

BRAZIL

ACIEL Comercio e Servicos LTDA
Tel: 55 11 5565 5798
Email: aciel@aciell.com.br

Positronic Sistemas Industrias Ltda.
Tel: 55 11 3832 2738
Email: info@positronic.com.br

BULGARIA

BLS - Automation Ltd
Tel: 359 32 968 007
Email: idt@idt.d

CENTRAL AMERICA

Mercado Industrial Inc.
Tel: 1 305 854 9515
Email: rsaybe@mercadoindustrialinc.com

CHILE

Ingenieria Y Desarrollo
Tecnología SA
Tel: 56 2741 9624
Email: idt@idt.cl

CZECH REPUBLIC

Brno Drive Centre
Tel: 420 541 192111
Fax: 420 541 192115
After Hours: 420 541 192 119

DENMARK

Copenhagen Drive Centre
Tel: 45 4369 6100
Fax: 45 4369 6101
After Hours: 45 4369 6100

FRANCE

Angouleme Drive Centre
Tel: 33 5 4564 5454
Fax: 33 5 4564 5400

GERMANY

Bonn Drive Centre
Tel: 49 2242 8770
Fax: 49 2242 877277
After Hours: 49 1714 964777

IRELAND

Chemnitz Drive Centre
Tel: 49 3722 52030
Fax: 49 3722 520330
After Hours: 49 1714 964777

ITALY

Darmstadt Drive Centre
Tel: 49 6251 17700
Fax: 49 6251 177098
After Hours: 49 1714 964777

GREECE

Athens Application Centre
Tel: 0030 210 57 86086/088
Fax: 0030 210 57 86087

HOLLAND

Rotterdam Drive Centre
Tel: 31 184 420555
Fax: 31 184 420721
After Hours: 31 184 420555

HONG KONG

Hong Kong Application Centre
Tel: 852 2979 5271
Fax: 852 2979 5220
After Hours: 852 2979 5271

COLOMBIA

Sistronic LTDA
Tel: 57 1 410 04 24
Email: jonesdug@colomsat.net.co

CROATIA

Koncar - MES d.d.
Tel: 385 1 366 7273
Email: nabava@koncar-mes.hr

CYPRUS

Acme Industrial Electronic
Services Ltd
Tel: 3572 5 332181
Email: acme@cytanet.com.cy

EGYPT

Samiram
Tel: 202 7603877/202 7605950
Email: corporate@samiram.com

FINLAND

SKS Control
Tel: 358 985 2661
Email: control@sksf.fi

HUNGARY

Control-VH Kft
Tel: 361 431 1160
Email: info@controlvh.hu

ICELAND

Samey ehf
Tel: 354 510 5200
Email: samey@samey.is

INDIA

Mumbai Application Centre
Tel: 91 20 612 7956, 612 8415
Fax: 91 20 611 3312

Kolkata Application Centre
Tel: 91 33 2357 5302/2357 5306
Fax: 91 33 2357 3435
After Hours: 91 98 3004 8562

Chennai Drive Centre
Tel: 91 44 2496 1123/
2496 1130/2496 1083
Fax: 91 44 2496 1602
After Hours: 91 44 2496 1083

New Delhi Application Centre
Tel: 91 11 2 576 4782/
91 11 2 581 3166
Fax: 91 11 51 539216

IRELAND

Dublin Drive Centre
Tel: 353 45 448200
Fax: 353 45 433622

ITALY

Milan Drive Centre
Tel: 39 02575 751
Fax: 39 02575 12858
After Hours: 39 02575 751

Reggio Emilia Drive Centre
Tel: 39 02575 751
Fax: 39 02575 12858
After Hours: 39 02575 751

Vicenza Drive Centre
Tel: 39 0444 396200
Fax: 39 0444 341317
After Hours: 39 02 575 751

KOREA

Seoul Application Centre
Tel: 82 31 703 7169
Fax: 82 31 703 7168
After Hours: 82 31 703 7185

INDONESIA

Pt Apikon Indonesia
Tel: 65 6468 8979
Email: ooivc@controltechniques.com.my

INDONESIA

Pt Yua Esa
Pempurna Sejahtera
Tel: 65 6468 8979
Email: ooivc@controltechniques.com.my

ISRAEL

Dor Drives Systems Ltd
Tel: 972 3900 7595
Email: info@dor1.co.il

KENYA

Kassam & Bros Co. Ltd
Tel: 254 2 556 418
Email: kassambros@bidi.com

KUWAIT

Saleh Jamal & Company WLL
Tel: 965 483 2358
Email: scjeng@almullagroup.com

LATVIA

EMT
Tel: 371 760 2026
Email: janis@emt.lv

LEBANON

Black Box Automation & Control
Tel: 961 1 443773
Email: info@blackboxcontrol.com

MALAYSIA

Kuala Lumpur Drive Centre
Tel: 603 5634 9776
Fax: 603 5633 9592
After Hours: 60 12 333 8355

REPUBLIC OF SOUTH AFRICA

Johannesburg Drive Centre
Tel: 27 11 462 1740
Fax: 27 11 462 1941
After Hours: 27 11 462 1740

Cape Town Application Centre
Tel: 27 21 556 0245
Fax: 27 21 556 2574
After Hours: 27 11 462 1740

RUSSIA

Moscow Application Centre
Tel: 7 095 232 9472
Fax: 7 095 956 4862

SINGAPORE

Singapore Drive Centre
Tel: 65 6468 8979
Fax: 65 6468 6982
After Hours: 65 9752 5828/
9636 0323

SPAIN

Barcelona Drive Centre
Tel: 34 93 680 1661
Fax: 34 93 680 0903
34 93 680 2823
After Hours: 34 610 554540

BILBAO APPLICATION CENTRE

Tel: 34 94 620 3646
Fax: 34 94 681 1406
After Hours: 34 61-055-4547

VALENCIA DRIVE CENTRE

Tel: 34 96 154 2900
Fax: 34 96 153 2906
After Hours: 34 66 642 8514

Distributors

LITHUANIA

Elinta UAB
Tel: 370 37 351 987
Email: sigitas@elinta.lt

MALTA

Mekanika Limited
Tel: 35621 442 039
Email: mfrancia@gasan.com

MEXICO

MELCSA
Tel: 52 55 5561 1312
Email: melcsamx@serve.net.mx
SERVITECK, S.A de C.V.
Tel: 52 55 5398 9591
Email: servitek@data.net.mx

MOROCCO

Leroy Somer Maroc
Tel: 212 22 354948
Email: lsmaroc@wanadooopro.ma

NEW ZEALAND

Electrade New Zealand
Tel: 64 9525 1753
Email: kevin@electrade.co.nz

PHILIPPINES

Control Techniques Singapore Ltd
Tel: 65 6468 8979
Email: ooivc@controltechniques.com.my

SWEDEN

Stockholm Application Centre
Tel: 468 554 241 00
Fax: 468 554 241 10
After Hours: 467 044 183 29

SWITZERLAND

Lausanne Application Centre
Tel: 41 21 637 7070
Fax: 41 21 637 7071
After Hours: 41 79 357 8683

Zurich Drive Centre
Tel: 41 56 201 4242
Fax: 41 56 201 4243
After Hours: 41 79 357 8683

TAIWAN

Taipei Application Centre
Tel: 886 22325 9555
Fax: 886 22705 9131
After Hours: 886 92186 6502

THAILAND

Bangkok Drive Centre
Tel: 66 2580 7644
Fax: 66 2591 4559
A/Hours Sales: 66 1443 4095
A/Hours Service: 66 1443 4098

TURKEY

Istanbul Drive Centre
Tel: 90 216 4182420
Fax: 90 216 4182423
After Hours: 90 216 418 2420

UAE

Dubai Application Centre
Tel: 971 4 883 8650
Fax: 971 4 883 8651

UNITED KINGDOM

Telford Drive Centre
Tel: 44 1952 213700
Fax: 44 1952 213701
After Hours: 44 1952 213700

POLAND

APATOR CONTROL Sp. z o.o.
Tel: 48 56 6191 207
Email: drives@apator.torun.pl

PORTUGAL

Harker Summer S.A
Tel: 351 22 947 8090
Email: drives.automation@harker.pt

PUERTO RICO

Powermotion
Tel: 1 787 843 3648
Email: dennis@powermotionpr.com

QATAR

AFI Sitna Technologies
Tel: 974 468 4442
Email: jpb33@qatar.net.qa

ROMANIA

Dor Drives International
Tel: 40 21 337 3465
Email: dordrive@zappmobile.ro

SAUDI ARABIA

A. Abunayyan Electric Corp.
Tel: 9661 477 9111
Email: aec-salesmarketing@abunayyangroup.com

USA

California Drive Centre
Tel: 1 562 943 0300
Fax: 1 562 902 9360

Charlotte Application Centre
Tel: 1 704 393 3366
Fax: 1 704 393 0900
After Hours: 1 800 893 2321

Chicago Application Centre
Tel: 1 630 752 9090
Fax: 1 630 752 9555
After Hours: 1 800 893 2321

Cleveland Drive Centre
Tel: 1 440 717 0123
Fax: 1 440 717 0133
After Hours: 1 800 893 2321

Florida Drive Centre
Tel: 1 239 693 7200
Fax: 1 239 693 2431

Latin America Sales Office
Tel: 1 305 818 8897
Fax: 1 305 818 8888
Email: alfredo.rivas@emersonct.com

Minneapolis US Headquarters
Tel: 1 952 995 8000
Fax: 1 952 995 8020/8099
After Hours: 1 800 893 2321

Oregon Drive Centre
Tel: 1 503 266 2094
Fax: 1 503 266 1152

Providence Drive Centre
Tel: 1 401 541 7277
Fax: 1 401 541 7266
After Hours: 1 800 893 2321

Utah Drive Centre
Tel: 1 801 566 5521
Fax: 1 801 566 5673

SERBIA & MONTENEGRO

Master Inzenjering d.o.o.
Tel: 381 24 551 605
master@eunet.yu

SLOVAKIA

EMERSON A.S
Tel: +421 32 7700 369
petersk@vuma.sk

SLOVENIA

PS Logatec
Tel: 386 1 750 8510
Email: ps-log@ps-log.si

TUNISIA

SJA Ben Djermaa & CIE
Tel: 216 1 332 923
Email: bendjermaa@planet.tn

URUGUAY

Secoin S.A
Tel: 5982 2093815
Email: secoin@adinet.com.uy

VENEZUELA

Vertix Instrumentos, S.A
Tel: 58 281 267 4115

Digimex Sistemas C.A.
Tel: 58 243 551 1634

VIETNAM

N.Duc Thinh
Tel: 84 8 9490633
Email: infotech@nducthinh.com.vn